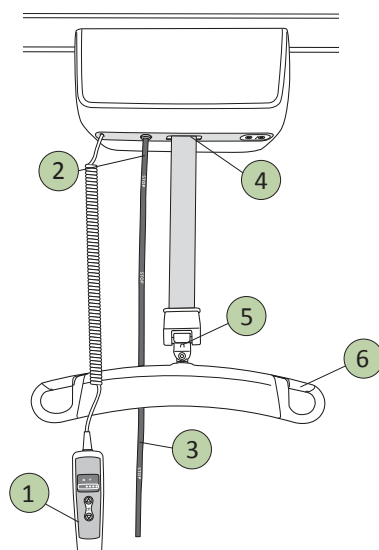


LikoGuard™ Overhead Lift

Quick Reference Guide

English



189405 Rev.1 EN_ES

Safety Instructions

⚠ This warning symbol indicates that special care should be taken. If instructions are not followed there is a risk of serious injury to patient or caregiver.

⚠ Read the user manuals for the lift and lifting accessories before use.

- Plan every transfer situation carefully

⚠ Before the patient is lifted from the underlying surface, but after the straps have been fully extended, make sure the straps are properly connected to the sling bar.

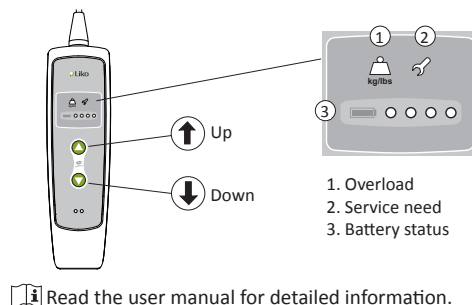
- **Maximum load:** LikoGuard™ L: 272 kg (600 lbs.)
LikoGuard™ XL: 363 kg (800 lbs.)

⚠ The entire lift system's total maximum load is always determined by the product of the system that has the lowest specified maximum load.

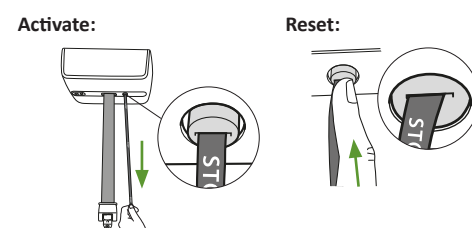
IMPORTANT!

This quick reference guide does not replace the lift's user manual. Liko™ user manuals can be downloaded from www.liko.com.

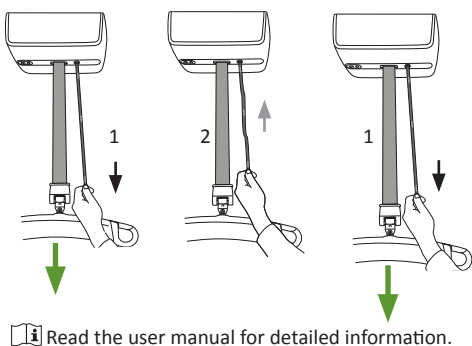
1 Hand Control



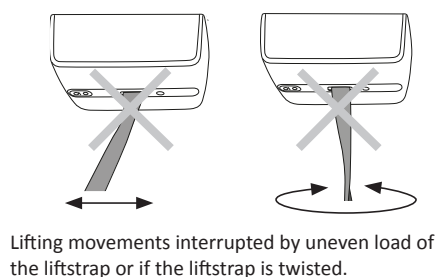
2 Emergency Stop



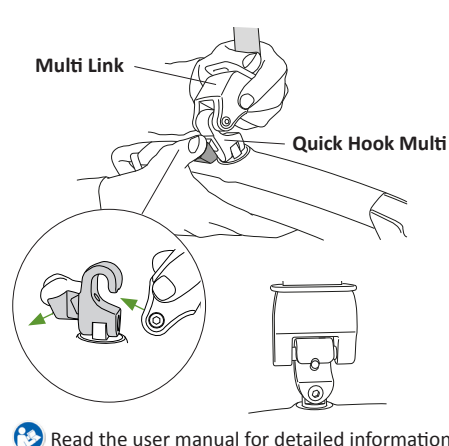
3 Mechanical Emergency Lowering



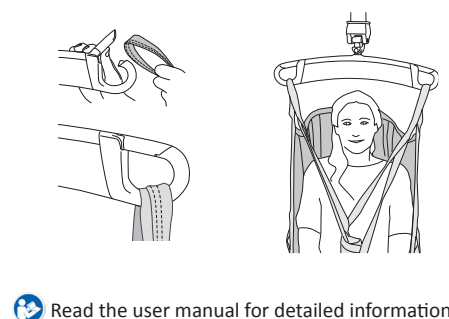
4 Limit Switch



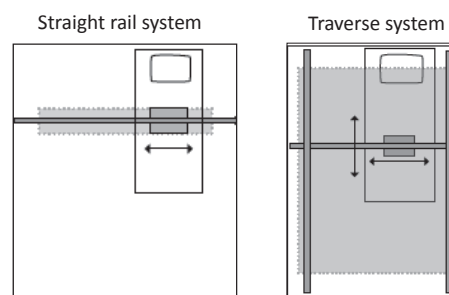
5 Quick-release Hook



6 Latches



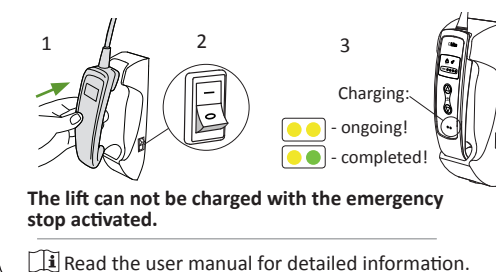
Lifting area



Lift area is highlighted in gray under the current lift system.

Read the user manual for detailed information.

Charging with wall charger



Ergonomics

- Never lift manually – let the lift do the lifting.
- Take it easy. Work calmly and methodically.
- Don't strain your back! Work in a walking stance with your back straight.
- Use the bed's raising and lowering functions.
- Reduce the lever effect. Work close to the patient and the lift.

Cleaning

When necessary, clean the lift with a moist cloth. For detailed information regarding cleaning and disinfection we refer to the user manual.

Read the user manual for detailed information.

Simple Troubleshooting

Check to ensure that:

- the emergency stop is not activated, if the emergency stop is activated, reset it, see 2
- the battery is charged.

Other Quick Reference Guides

Quick reference guides for Liko™ lifts and Liko™slings are available for downloading from www.liko.com.

(C)2014. Liko R&D AB. All Rights Reserved.



Liko AB
Nedre vägen 100
SE-975 92 Luleå, Sweden

www.hill-rom.com | www.liko.com

Enhancing outcomes for patients and their caregivers.



7EN121501 Rev.1