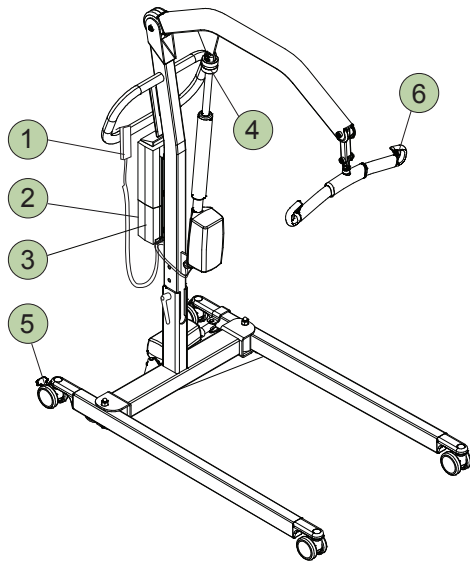


# Uno 102

## Quick Reference Guide

English



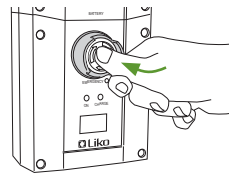
### 1 Hand Control



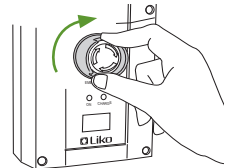
- ↑ Up
- ↓ Down
- ⊕ Widening the base
- ⊖ Narrowing the base
- ⚡ Indicating low battery capacity

### 2 Emergency Stop

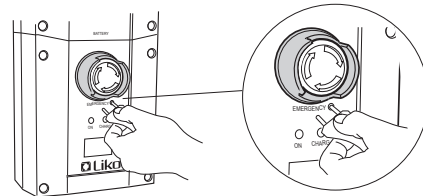
Activate:



Reset:

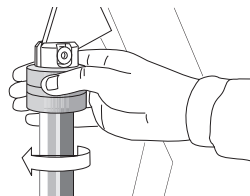


### 3 Electrical Emergency Lowering

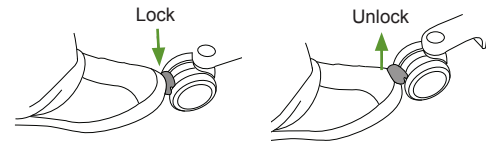


**⚠ The object used to press with must not be sharp, since this may cause damage to the control box!**

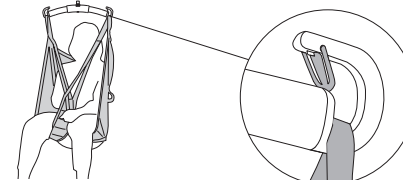
### 4 Mechanical Emergency Lowering



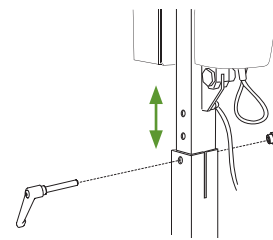
### 5 Locking the Wheels



### 6 Latches



### Adjustments



For more information read the Instruction Guide.

### Position of the Lift when Lifting

From/To: Bed Chair/Hygiene chair Floor



**⚠ Unbalanced lifting poses a tipping risk!**

Read the instruction guide for more information.

### Charging of Batteries

- Charge the lift regularly after use.
- The lift does not function during charging.
- **The emergency stop should not be pressed in during charging.**

### Ergonomics

- Never lift manually – let the lift unit do the lifting.
- Take it easy. Work calmly and methodically.
- Don't strain your back! Work in a walking stance with your back straight.
- Use the bed's raising and lowering functions.
- Reduce the lever effect. Work close to the patient and the lift.

### Cleaning

When necessary, clean the lift with a moist cloth.

For more information read the Instruction Guide.

### Simple Troubleshooting

**Check to ensure that:**

- emergency stop is not pressed in, see 2
- the battery is charged
- the hand control is properly connected.

### Other Quick Reference Guides

Quick Reference Guides for Liko's lifts and slings are available for downloading from [www.liko.com](http://www.liko.com).

© Copyright Liko AB



### Safety Instructions

- Read the Instruction Guide for the lift and lifting accessories before use.
- Plan the lifting operation carefully.
- Before the patient is lifted from the underlying surface, but when the sling straps are properly extended, it is important to ensure that the straps are correctly attached to the slingbar.
- **Max. load Uno 102: 175 kg (385 lbs.)**  
To retain max. load it is essential to use accessories rated for the same max. load or greater.

### IMPORTANT!

This Quick Reference Guide does not replace the lift's Instruction Guide, which can be downloaded from [www.liko.com](http://www.liko.com).

7EN150501-03



A Hill-Rom Company

[www.liko.com](http://www.liko.com)

Manufacturer:

Liko AB  
Nedre vägen 100  
SE-975 92 Luleå  
Sweden  
[info@liko.se](mailto:info@liko.se)